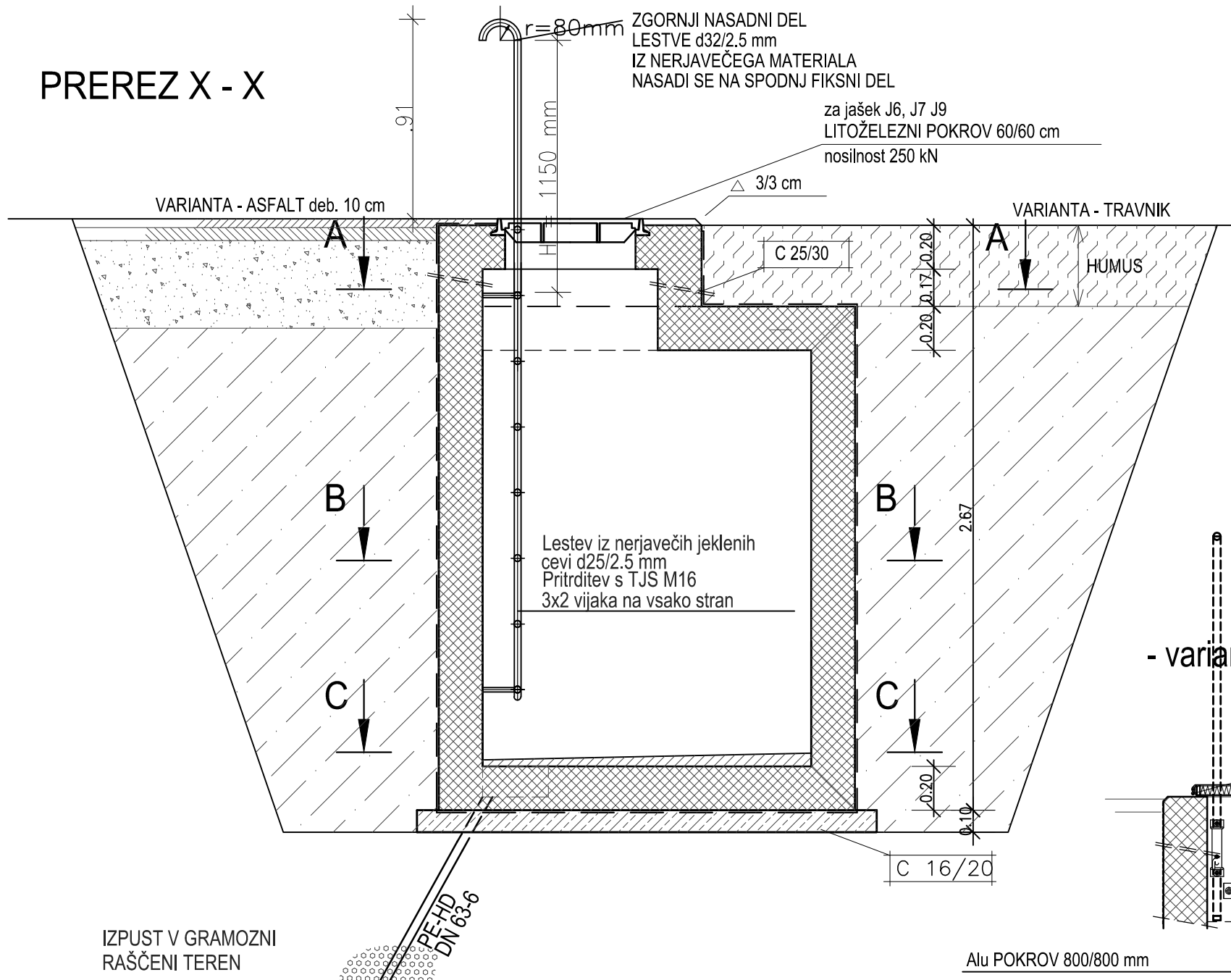
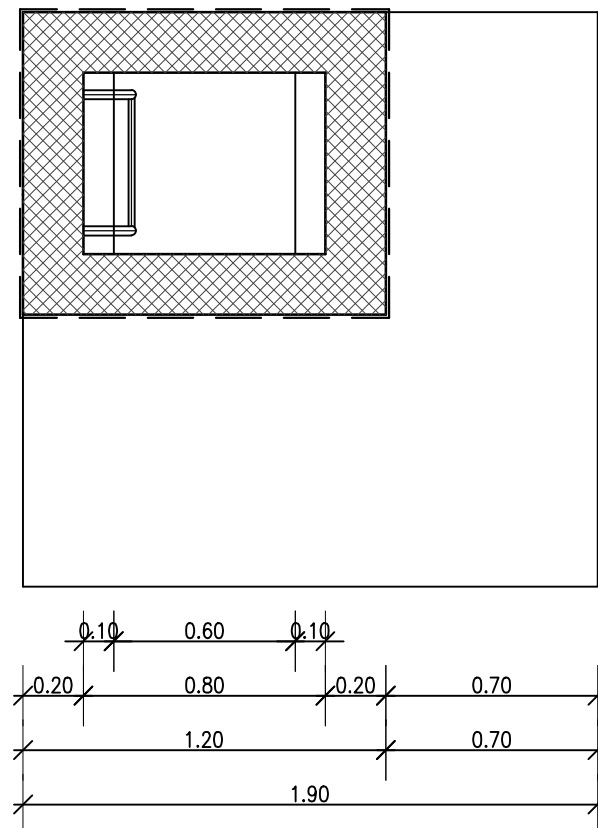


PREREZ X - X

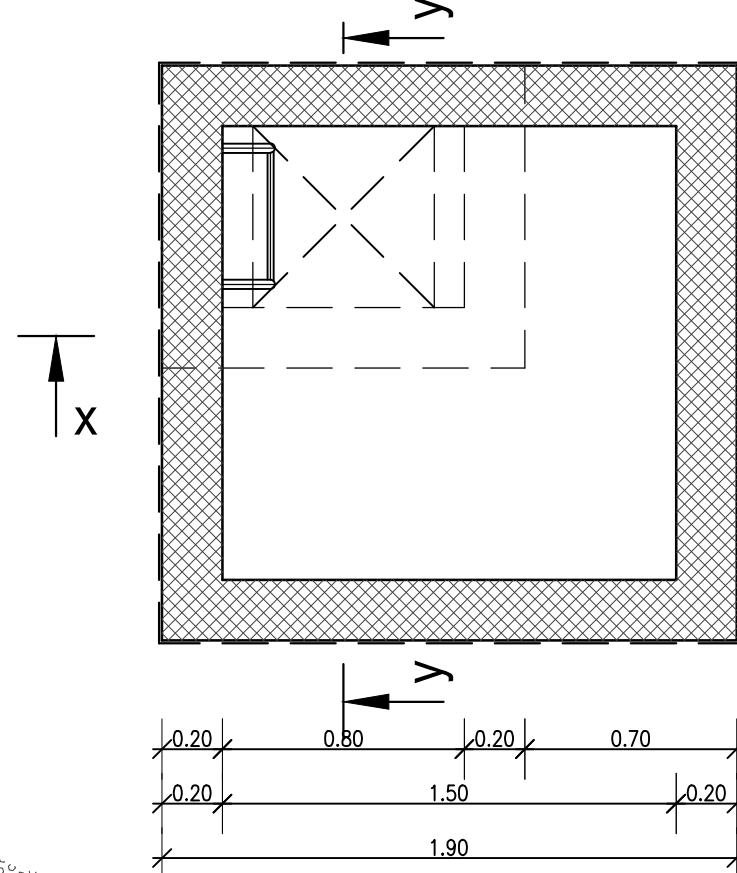


PREREZ A - A, M 1 : 25

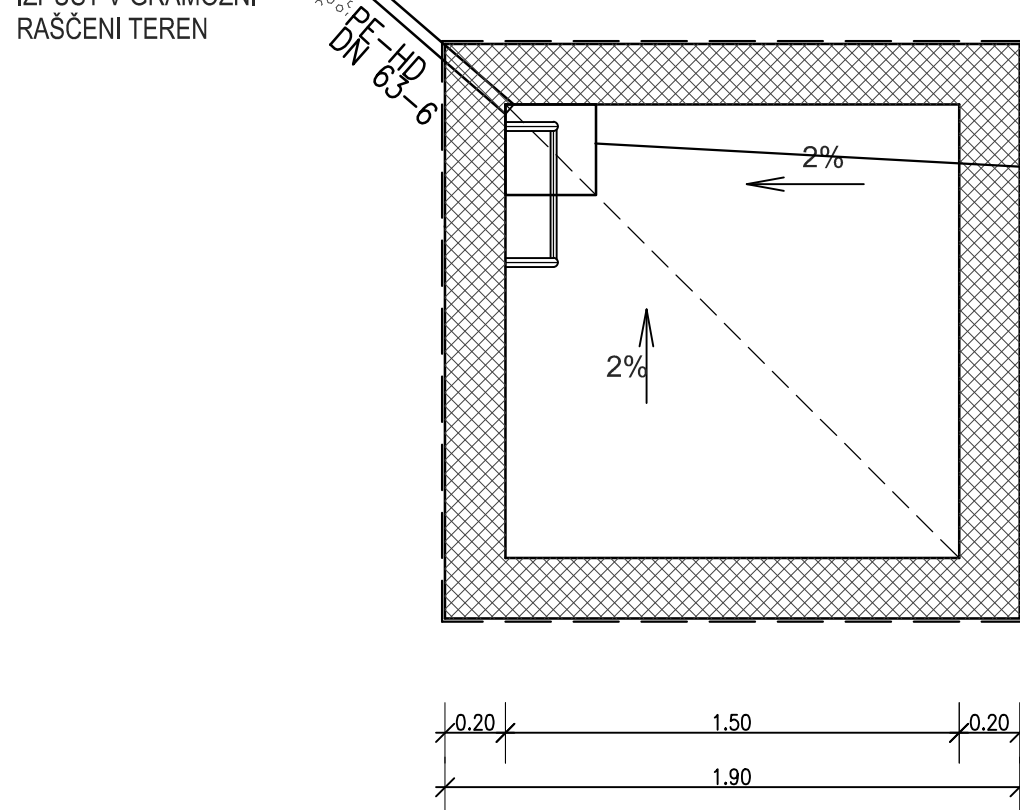
- varianta 1



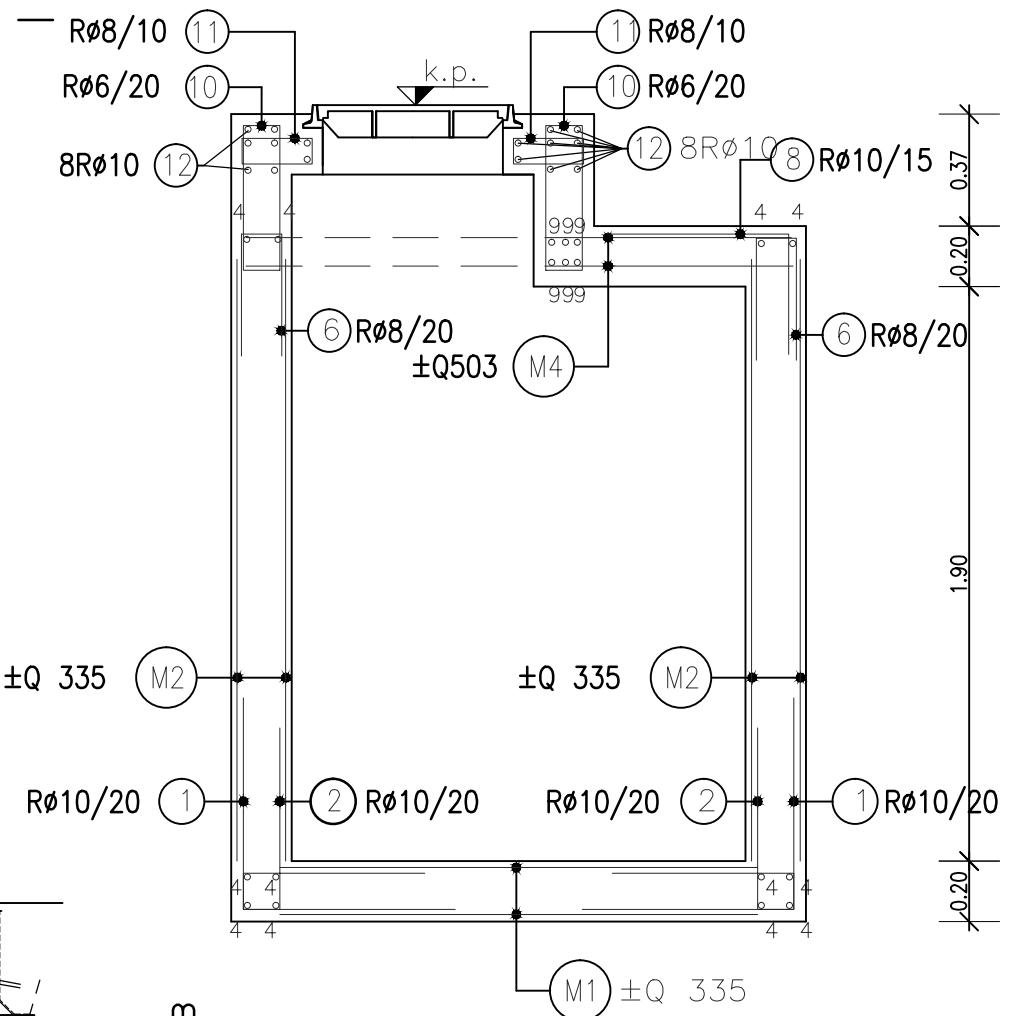
PREREZ B - B, M 1 : 25



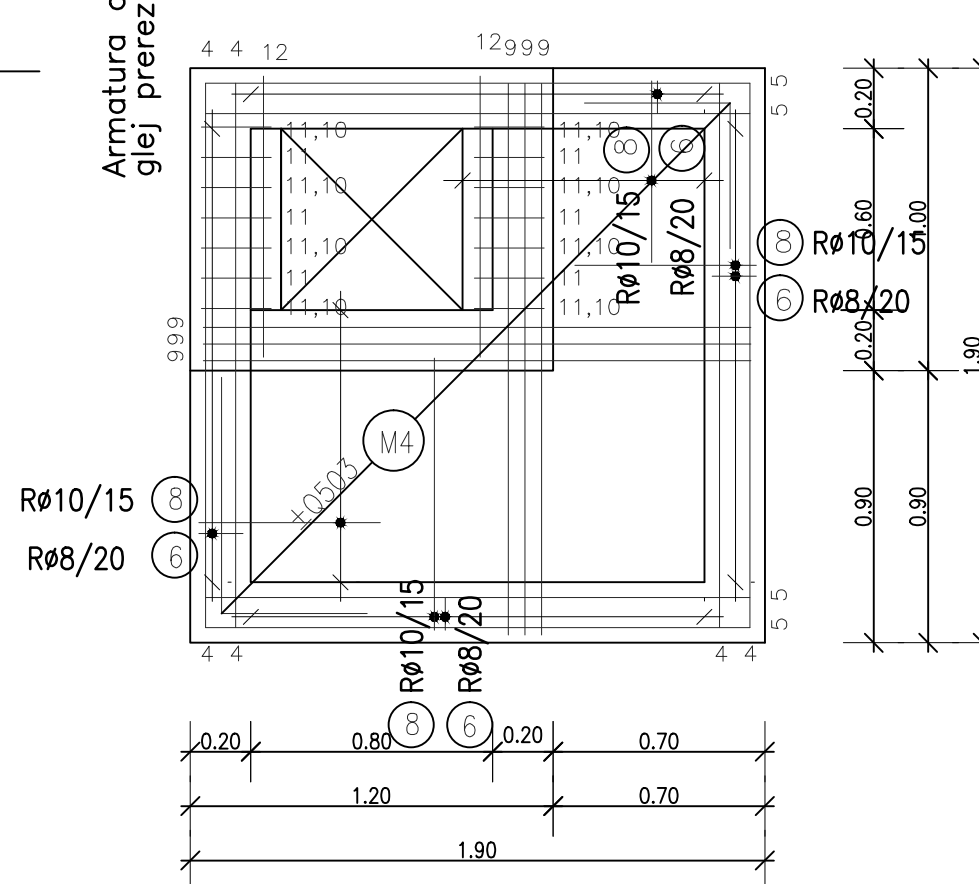
PREREZ C - C, M 1 : 25



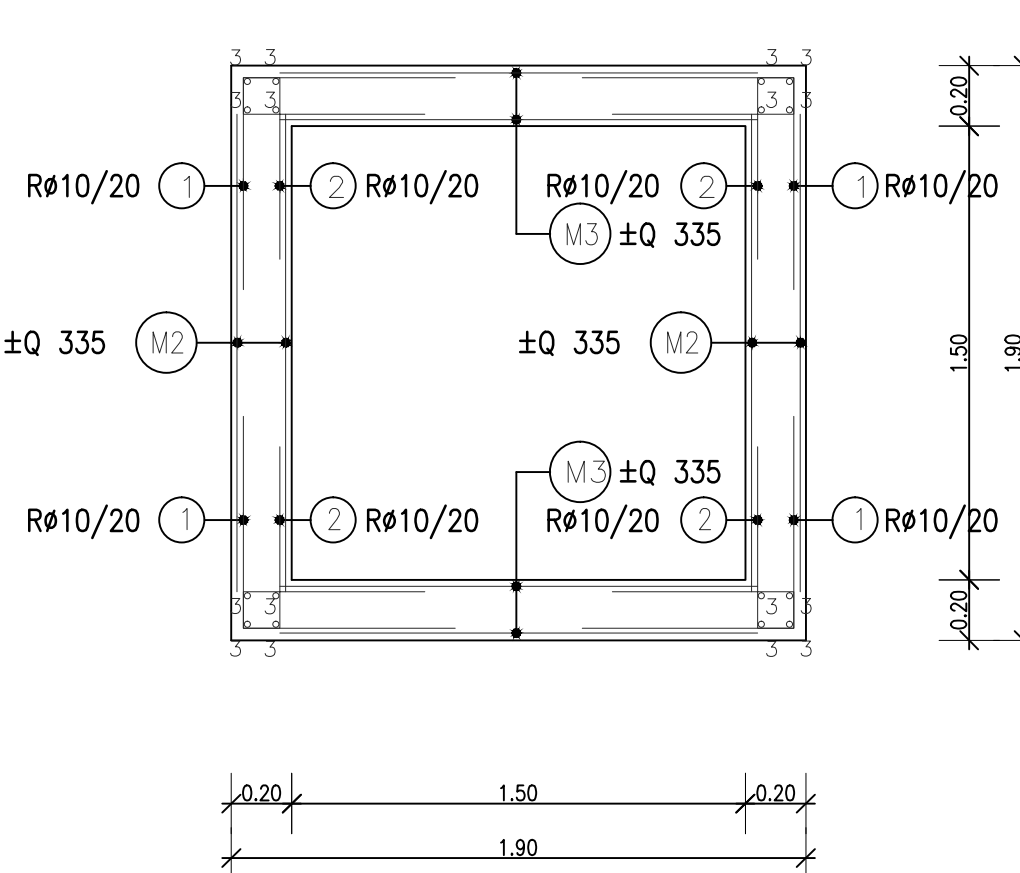
PREREZ X - X, M 1 : 25



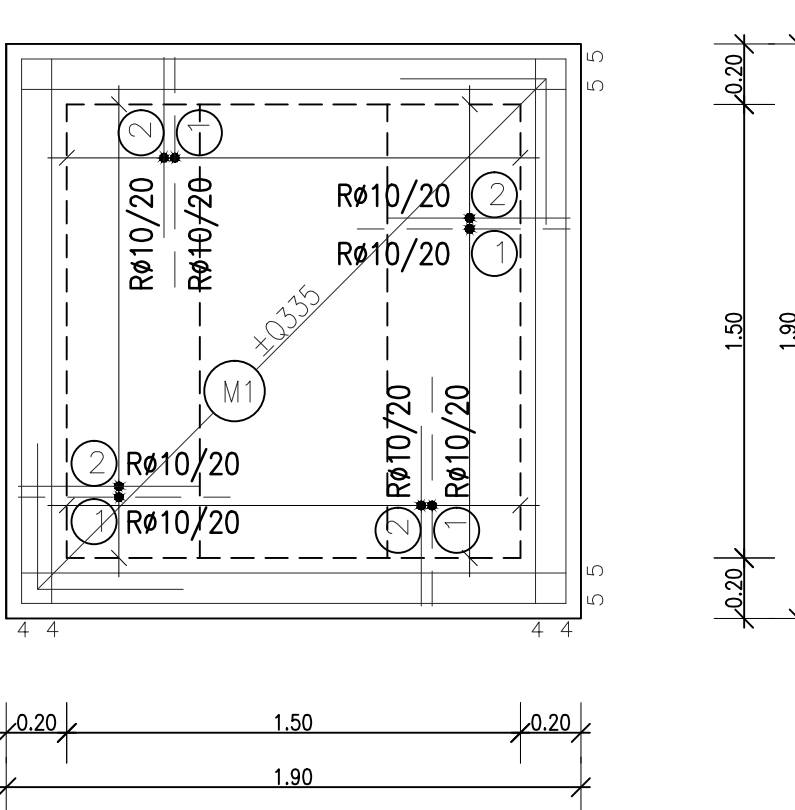
KROVNA PLOŠČA, M 1 : 25



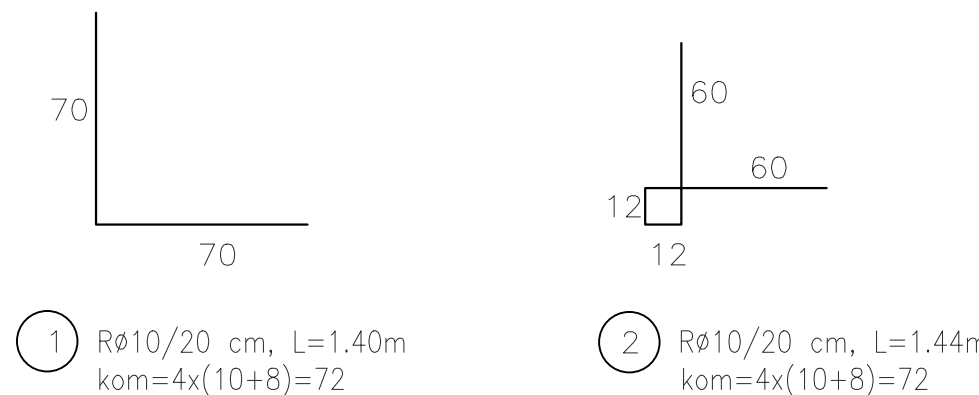
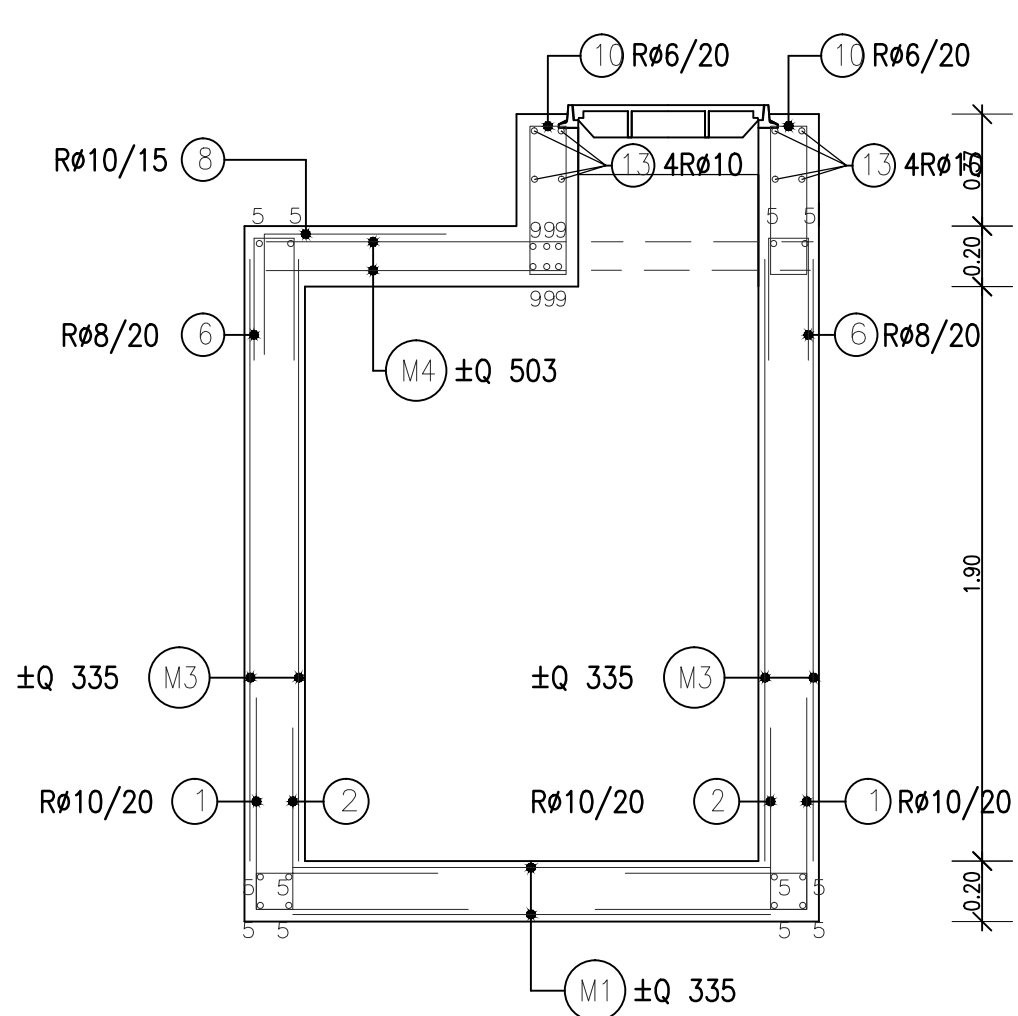
PREREZ B - B, M 1 : 25



TALNA PLOŠČA



PREREZ Y - Y, M 1 : 25



1 Rø10/20 cm, L=1.40m  
kom=4x(10+8)=72

2 Rø10/20 cm, L=1.44m  
kom=4x(10+8)=72

3 Rø12, L=2.00m, kom=16

4 Rø12, L=1.80m, kom=12

5 Rø12, L=1.80m, kom=12

6 Rø8/20, L=0.93m, kom=2x(8+8)=32

7 Rø10, L=0.80m, kom=2x2x4=16

8 Rø10/15, L=1.00m, kom=11+11+5+5=32

9 Rø12, L=2.04m, kom=6x2=12

10 Rø6/20cm, L=1.32m kom=4x5=20

11 Rø8/10cm, L=0.50m kom=14

12 Rø10, L=0.90m, kom=2x8=16

13 Rø10, L=1.10m, kom=2x4=8

14 Rø10, L=0.90m kom=12

BETON C 25/30

RA 400/500-2

MAG 500/560

a = 3.5 cm

SPECIFIKACIJA ARMATURE

ARMATURNE MREZE

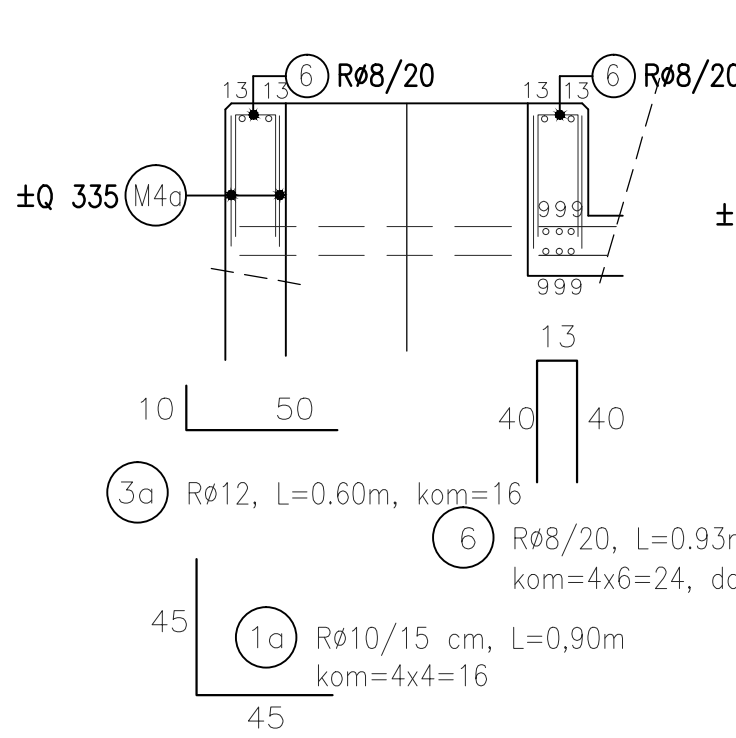
| POZ               | OZNAKA | DIMENZIJA     |   | Q221<br>(m <sup>2</sup> ) | Q335<br>(m <sup>2</sup> ) | Q503<br>(m <sup>2</sup> ) |
|-------------------|--------|---------------|---|---------------------------|---------------------------|---------------------------|
| M1                | Q 335  | 160x160       | 2 |                           | 5.12                      |                           |
| M2                | Q 335  | 205x160       | 4 |                           | 13.12                     |                           |
| M3                | Q 335  | 205x160       | 4 |                           | 13.12                     |                           |
| M4                | Q 503  | 170x170       | 2 |                           |                           | 5.78                      |
| M4a               | Q 503  | opcija 110x40 | 8 |                           | 3.52                      |                           |
| Σ m <sup>2</sup>  |        |               |   | 0.00                      | 31.36                     | 5.78                      |
| kg/m <sup>2</sup> |        |               |   | 3.60                      | 5.44                      | 7.90                      |
| Σ kg              |        |               |   | 0.00                      | 170.60                    | 45.66                     |
| SKUPAJ:           |        |               |   | 216.26 kg                 |                           |                           |

ARMATURNE PALICE

| POZ     | ø  | KOM | L (m') | Σ L (m')  |       |        |       |
|---------|----|-----|--------|-----------|-------|--------|-------|
|         |    |     |        | ø6        | ø8    | ø10    | ø12   |
| 1       | 10 | 72  | 1.40   |           |       | 100.80 |       |
| 2       | 10 | 72  | 1.44   |           |       | 103.68 |       |
| 3       | 12 | 16  | 2.00   |           |       |        | 32.00 |
| 4       | 12 | 12  | 1.80   |           |       |        | 21.60 |
| 5       | 12 | 12  | 1.80   |           |       |        | 21.60 |
| 6       | 8  | 32  | 0.93   |           | 29.76 |        |       |
| 7       | 10 | 16  | 0.80   |           |       | 12.80  |       |
| 8       | 10 | 32  | 1.00   |           |       | 32.00  |       |
| 9       | 12 | 12  | 2.04   |           |       |        | 24.48 |
| 10      | 6  | 20  | 1.32   | 26.40     |       |        |       |
| 11      | 8  | 14  | 0.50   |           | 7.00  |        |       |
| 12      | 10 | 16  | 0.90   |           |       | 14.40  |       |
| 13      | 10 | 8   | 1.10   |           |       | 8.80   |       |
| 14      | 10 | 12  | 0.90   |           |       | 10.80  |       |
| Σ m     |    |     |        | 26.40     | 36.76 | 283.28 | 99.68 |
| kg/m    |    |     |        | 0.230     | 0.405 | 0.633  | 0.911 |
| Σ kg    |    |     |        | 6.07      | 14.89 | 179.32 | 90.81 |
| SKUPAJ: |    |     |        | 291.09 kg |       |        |       |

opomba: naročiti armaturo za ustrezno vstopno odprtino

PREREZ -vstopna odp.  
- varianta 1



TLORIS -vstopna odp.  
- varianta 2

